



Pattern Collection: Accessories



Sashay Cowl

Designed by Rachel Brockman

DIFFICULTY

Intermediate

SIZES

Small (Large)

Shown in Large Size

FINISHED MEASUREMENTS

Circumference: 27¾ (55¾)"

Length: 8 (10¾)"

MATERIALS

Universal Yarn *Deluxe DK Tweed Superwash* (90% superwash wool, 7% acrylic, 3% viscose; 100g/284 yds)

- 418 Terra Cotta (A) – 2 (3) balls
- 407 Denim (B) – 1 (2) balls
- 410 Porcelain (C) – 1 (2) balls

Needles: US Size 8 (5 mm) 16" circular *or size needed to obtain gauge*

Notions: Tapestry needle, stitch marker, cable needle, waste yarn, US Size H-8 (5 mm) crochet hook

GAUGE

24 sts x 25 rows = 4" in Stranded patt

Save time, check your gauge.

Knit. Relax. Smile. Repeat!

2020 © Universal Yarn, Inc.

All rights reserved.

This pattern may not be reproduced for business, trade or sale.

PATTERN NOTES

Graphic colorwork and a sprinkling of cables adorn this cozy winter cowl. At a glance, the stranded pattern looks like stars. Look again, and you may be reminded of mosaic tile, lattice, or flowers. This cowl begins with a provisional cast-on, is knit in the round, and the ends are grafted together to form a seamless tube. This makes for a neck accessory that is effortless to wear, as there is no wrong side. The long version (shown) can be doubled up when the weather calls for it.

Crochet Provisional Cast-on: With waste yarn and crochet hook, make a ch approximately 10 chs longer than the number of sts to be cast on. With working yarn and knitting needle, pick up and knit sts through the bottom bumps of each ch.

STITCH GUIDE

3x3 Left Cross (LC): Sl next 3 sts to cn and hold in front, k3 from left ndl, k3 from cn.

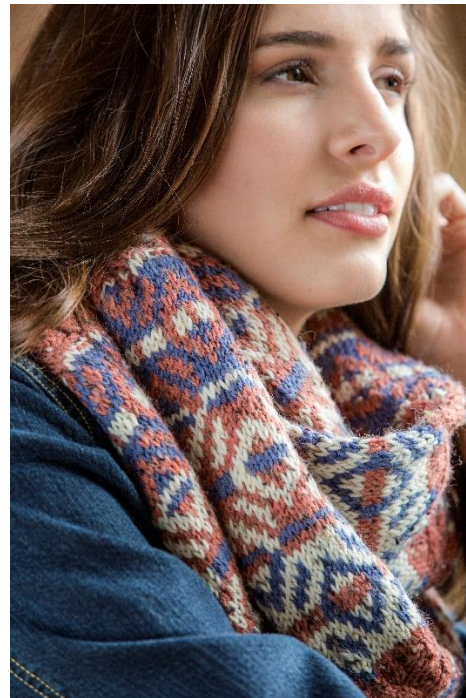
3x3 Right cross (RC): Sl next 3 sts to cn and hold in back, k3 from left ndl, k3 from cn.

COWL

Using waste yarn and the crochet provisional method, cast on 96 (128) sts. PM and join in the rnd, being careful not to twist sts. With A, work Rnds 1-58 of Fair Isle and Cables patt 3 (6) times. Patt will be repeated 6 (8) times across each rnd. Do not bind off.

FINISHING

Carefully remove waste yarn from the cast-on edge. Using A, graft the two ends of live sts together using Kitchener st and A. Block to finished measurements and weave in ends.



Abbreviations

ch	chain
cn	cable needle
k	knit
m	marker
ndl	needle
patt	pattern
pm	place marker
rep	repeat
rnd	round
sl	slip
st(s)	stitch(es)

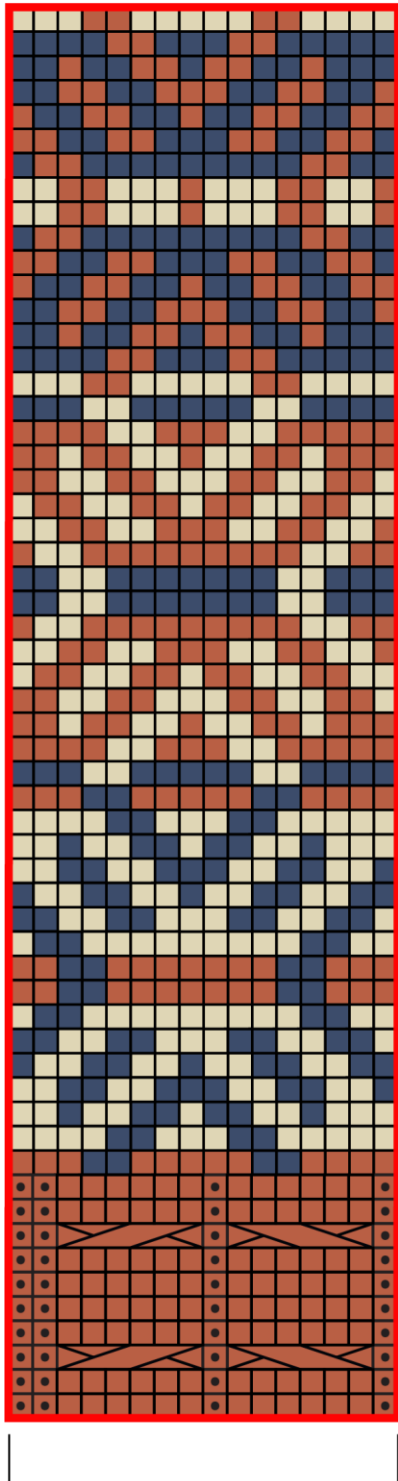
Knit. Relax. Smile. Repeat!

2020 © Universal Yarn, Inc.

All rights reserved.

This pattern may not be reproduced for business, trade or sale.








Fair Isle & Cables



16 stitch repeat

58
57
56
55
54
53
52
51
50
49
48
47
46
45
44
43
42
41
40
39
38
37
36
35
34
33
32
31
30
29
28
27
26
25
24
23
22
21
20
19
18
17
16
15
14
13
12
11
10
9
8
7
6
5
4
3
2
1

Key

-  pattern repeat
-  with A, knit
-  with B, knit
-  with C, knit
-  with A, purl
-  with A, 3x3 LC
-  with A, 3x3 RC

Knit. Relax. Smile. Repeat!

2020 © Universal Yarn, Inc.

All rights reserved.

This pattern may not be reproduced for business, trade or sale.