



## PATTERN COLLECTION

### Women



#### Homestead Tank

Designed by Aubrey Busek

#### DIFFICULTLY

Intermediate

#### SIZES

Small/Medium (Large/1X/2X, 3X/4X, 5X/6X)

*Shown in Small size with approx. 5" positive ease.*

#### FINISHED MEASUREMENTS

Bust: 38 $\frac{1}{4}$  (48 $\frac{1}{2}$ , 58 $\frac{1}{2}$ , 68 $\frac{3}{4}$ )"

Length: 22 (23 $\frac{1}{2}$ , 26, 27 $\frac{1}{2}$ )"

#### MATERIALS

[Fibra Natura Flax](#) (100% Linen; 50g/137 yds)

- 12 Tarragon - 5 (7, 8, 10) skeins

**Needles:** US Size 6 (4 mm) straight (or preferred needle for knitting flat) *or size needed to obtain gauge*

US Size 5 (3.75 mm) 16" straight (or your preferred needle for knitting flat)

**Notions:** Tapestry needle, stitch markers (optional), stitch holders or waste yarn, 7 (7, 8, 8) -  $\frac{3}{4}$ " buttons (buttons shown are [Katrinkles Sunburst & Palm buttons](#)), sewing needle and thread for attaching buttons

#### GAUGE

22 sts x 28 rows = 4" in Checkerboard Lace patt with larger ndl

Save time check your gauge.

Knit, Relax, Smile, Repeat!

2021 © Universal Yarn, Inc.

All rights reserved. This pattern may not be reproduced for business, trade or sale.

Questions? Contact [patterns@universalyarn.com](mailto:patterns@universalyarn.com)

## PATTERN NOTES

The Homestead Tank celebrates the joy of slow living. This airy top will be your companion layered over a flowy dress while you take in the warm breeze and bask in the sunshine. It's summertime simplicity at its best! The checkerboard motif is dotted with delicate lace diamonds. Buttons along the center back create a contemporary vibe for a classic design. Knit in Flax, the Homestead Tank will be perfectly breathable even on the most humid days. The durable linen creates a fabric that softens with every wash, ensuring you'll only love this top more with each wear!

This top is knit flat in pieces and seamed. The shoulders are joined with the three-needle bind-off. Stitches for the button bands are picked up and worked flat after seaming. Buttons are attached as the final step.

Although this garment is meant to be loose-fitting, it can look just as lovely with less ease. We recommend choosing a size approximately 0-8" larger than your natural bust measurement.

## STITCH GUIDE

### K1, P1 Rib

*(odd number of sts)*

**Row 1 (RS):** \* K1, p1; rep from \* to last st, k1.

**Row 2 (WS):** \* P1, k1; rep from \* to last st, p1.

Rep Rows 1-2 for patt.

### Checkerboard Lace Front

*(multiple of 14 sts, plus 7)*

**Row 1:** \* K7, p7; rep from \* to last 7 sts, k7.

**WS Row 2-10:** P7, \* K7, p7; rep from \* to end.

**Row 3:** \* K7, p3, yo, k2tog, p2; rep from \* to last 7 sts, k7.

**Row 5:** \* K7, p1, k2tog, yo, p1, yo, k2tog, p1; rep from \* to last 7 sts, k7.

**Row 7:** Rep Row 3.

**Row 9:** Rep Row 1.

**Row 11:** \* P7, k7; rep from \* to last 7 sts, p7.

**WS Rows 12-20:** K7, \* p7, k7; rep from \* to end.

**Row 13:** \* P3, yo, k2tog, p2, k7; rep from \* to last 7 sts, p3, yo, k2tog, p2.

**Row 15:** \* P1, k2tog, yo, p1, yo, k2tog, p1, k7; rep from \* to last 7 sts, p1, k2tog, yo, p1, yo, k2tog, p1.

**Row 17:** Rep Row 13.

**Row 19:** Rep Row 11.

Rep Rows 1-20 for patt.

### Checkerboard Lace Back

*(multiple of 14 sts, plus 7)*

**Row 1 (RS):** \* P7, k7; rep from \* to last 7 sts, p7.

**WS Rows 2-10:** K7, \* p7, k7; rep from \* to end.

**Row 3:** \* P3, yo, k2tog, p2, k7; rep from \* to last 7 sts, p3, yo, k2tog, p2.

**Row 5:** \* P1, k2tog, yo, p1, yo, k2tog, p1, k7; rep from \* to last 7 sts, p1, k2tog, yo, p1, yo, k2tog, p1.

**Row 7:** Rep Row 3.

**Row 9:** Rep Row 1.

**Row 11:** \* K7, p7; rep from \* to last 7 sts, k7.

**WS Rows 12-20:** P7, \* k7, p7; rep from \* to end.

**Row 13:** \* K7, p3, yo, k2tog, p2; rep from \* to last 7 sts, k7.

**Row 15:** \* K7, p1, k2tog, yo, p1, yo, k2tog, p1; rep from \* to last 7 sts, k7.

**Row 17:** Rep Row 13.

**Row 19:** Rep Row 11.

Rep Rows 1-20 for patt.

## PATTERN BEGINS

### FRONT

*Note: We recommend placing markers between pattern repeats to help you stay on track.*

With larger ndl, cast on 107 (135, 163, 191) sts.

**Row 1 (RS):** K1, work Row 1 of Checkerboard Lace Front to last st, k1. Patt will be repeated 7 (9, 11, 13) times across each row.

**Row 2 (WS):** P1, work Row 2 of Checkerboard Lace Front to last st, p1.

Cont as est'd through Row 20 of Checkerboard Lace Front, then cont in patt as est'd until piece meas 14 (14, 15, 15)" from cast-on edge, ending with a WS row.

### Shape Armholes

*Note: Maintain Checkerboard Lace Front patt as est'd throughout Armhole Shaping.*

Bind off 5 (5, 7, 7) sts at the beg of the next 2 rows – 97 (125, 149, 177) sts rem.

Working rows as outlined below, work a Dec Row every row, 0 (8, 16, 27) times – 0 (16, 32, 54) sts dec'd, 97 (109, 117, 123) sts rem.

**Dec Row (RS):** K1, k2tog, cont as est'd to last 3 sts, ssk, k1 – 2 sts dec'd.

**Dec Row (WS):** P1, ssp, cont as est'd to last 3 sts, ssp, p1 – 2 sts dec'd.

After all shaping is complete, cont even in patt as est'd until piece meas 2 (3½, 4½, 6)" from underarm bind-off, ending with a WS row.

Knit, Relax, Smile, Repeat!

2021 © Universal Yarn, Inc.

All rights reserved. This pattern may not be reproduced for business, trade or sale.

Questions? Contact [patterns@universalyarn.com](mailto:patterns@universalyarn.com)

### Shape Neck

*Note: Maintain Checkerboard Lace Front patt as est'd throughout Neck Shaping.*

**Row 1 (RS):** Cont as est'd over 46 (52, 56, 59) Left Front sts, bind off center 5 neck sts, cont as est'd over 46 (52, 56, 59) Right Front sts. Place Left Front sts on holder or waste yarn.

### Right Front

**Row 1 (WS Dec Row):** P1, cont as est'd to last 3 sts, ssp, p1 - 1 st dec'd, 45 (51, 55, 58) sts rem.

**Row 2 (RS Dec Row):** K1, ssk, cont as est'd to end - 1 st dec'd, 44 (50, 54, 57) sts rem.

Cont to work a Dec Row, every row, 20 (22, 20, 22) more times - 20 (22, 20, 22) sts dec'd, 24 (28, 34, 35) sts rem.

**Next Row (Even WS Row):** Cont in patt as est'd to end.

**Next Row (RS Dec Row):** K1, ssk, cont as est'd to end - 1 st dec'd, 23 (27, 33, 34) sts rem.

Rep last 2 rows, 6 (5, 8, 7) more times - 6 (5, 8, 7) sts dec'd, 17 (22, 25, 27) sts rem.

Work even in patt as est'd, if necessary, until piece meas 8 (9½, 11, 12½)" from armhole bind-off, ending with a WS row. Place sts on holder or waste yarn. Return Left Front sts to ndl.

### Left Front

**Row 1 (WS Dec Row):** P1, p2tog, cont as est'd to last st, p1 - 1 st dec'd, 45 (51, 55, 58) sts rem.

**Row 2 (RS Dec Row):** K1, cont as est'd to last 3 sts, k2tog, k1 - 1 st dec'd, 44 (50, 54, 57) sts rem.

Cont to work a Dec Row, every row, 20 (22, 20, 22) more times - 20 (22, 20, 22) sts dec'd, 24 (28, 34, 35) sts rem.

**Next Row (Even WS Row):** Cont in patt as est'd to end.

**Next Row (RS Dec Row):** K1, cont as est'd to last 3 sts, k2tog, k1 - 1 st dec'd, 23 (27, 33, 34) sts rem.

Rep last 2 rows, 6 (5, 8, 7) more times - 6 (5, 8, 7) sts dec'd, 17 (22, 25, 27) sts rem.

Work even in patt as est'd, if necessary, until piece meas 8 (9½, 11, 12½)" from armhole bind-off, ending with a WS row. Place sts on holder or waste yarn.

### LEFT BACK

*Note: We recommend placing markers between pattern repeats to help you stay on track.*

With larger ndl, cast on 51 (65, 79, 93) sts.

**Row 1 (RS):** K1, work Row 1 of Checkerboard Lace Back to last st, k1. Patt will be repeated 3 (4, 5, 6) times across each row.

**Row 2 (WS):** P1, work Row 2 of Checkerboard Lace Back to last st, p1.

Cont as est'd through Row 20 of Checkerboard Lace Back, then cont in patt as est'd until piece meas 14 (14, 15, 15)" from cast-on edge, ending with a RS row.

### Shape Armhole

*Note: Maintain Checkerboard Lace Back patt as est'd throughout Armhole Shaping.*

Bind off 5 (5, 7, 7) sts at the beg of the next WS row - 46 (60, 72, 86) sts rem.

Working rows as outlined below, work a Dec Row every row, 0 (8, 16, 27) times - 0 (8, 16, 27) sts dec'd, 46 (52, 56, 59) sts rem.

**Dec Row (RS):** K1, cont as est'd to last 3 sts, ssk, k1 - 1 st dec'd.

**Dec Row (WS):** P1, ssp, cont as est'd to last st, p1 - 1 st dec'd.

Cont even in patt as est'd until piece meas 3 (4½, 5½, 7)" from underarm bind-off, ending with a WS row.

### Shape Left Back Neck

*Note: Maintain Checkerboard Lace Back patt as est'd throughout Neck Shaping.*

Bind off 4 (5, 6, 7) sts at the beg of the next RS row - 42 (47, 50, 52) sts rem.

**Next Row (WS Even Row):** P1, cont as est'd to last st, p1.

**Next Row (RS Dec Row):** K1, ssk, cont as est'd to last st, k1 - 1 st dec'd, 41 (46, 49, 51) sts rem.

Rep Even Row and Dec Row, 4 (4, 6, 6) more times - 4 (4, 6, 6) sts dec'd, 37 (42, 43, 45) sts rem.

**Next Row (WS Dec Row):** P1, cont as est'd to last 3 sts, ssp, p1 - 1 st dec'd, 36 (41, 42, 44) sts rem.

**Next Row (RS Dec Row):** K1, ssk, cont as est'd to last st, k1 - 1 st dec'd, 35 (40, 41, 43) sts rem.

Rep WS and RS Dec Row, 9 (9, 8, 8) more times - 18 (18, 16, 16) sts dec'd, 17 (22, 25, 27) sts rem.

Work even in patt as est'd, if necessary, until piece meas 8 (9½, 11, 12½)" from armhole bind-off, ending with a WS row. Place sts on holder or waste yarn.

### RIGHT BACK

*Note: We recommend placing markers between pattern repeats to help you stay on track.*

Knit, Relax, Smile, Repeat!

2021 © Universal Yarn, Inc.

All rights reserved. This pattern may not be reproduced for business, trade or sale.

Questions? Contact [patterns@universalyarn.com](mailto:patterns@universalyarn.com)

With larger ndl, cast on 51 (65, 79, 93) sts.

**Row 1 (RS):** K1, work Row 1 of Checkerboard Lace Back to last st, k1. Patt will be repeated 3 (4, 5, 6) times across each row.

**Row 2 (WS):** P1, work Row 2 of Checkerboard Lace Back to last st, p1.

Cont as est'd through Row 20 of Checkerboard Lace Back, then cont in patt as est'd until piece meas 14 (14, 15, 15)" from cast-on edge, ending with a WS row.

### Shape Armhole

*Note: Maintain Checkerboard Lace Back patt as est'd throughout Armhole Shaping.*

Bind off 5 (5, 7, 7) sts at the beg of the next RS row – 46 (60, 72, 86) sts rem.

Working rows as outlined below, work a Dec Row every row, 0 (8, 16, 27) times – 0 (8, 16, 27) sts dec'd, 46 (52, 56, 59) sts rem.

**Dec Row (WS):** P1, cont as est'd to last 3 sts, p2tog, p1 – 1 st dec'd.

**Dec Row (RS):** K1, k2tog, cont as est'd to last st, k1 – 1 st dec'd.

Cont even in patt as est'd until piece meas 3 (4½, 5½, 7)" from underarm bind-off, ending with a RS row.

### Shape Left Back Neck

*Note: Maintain Checkerboard Lace Back patt as est'd throughout Neck Shaping.*

Bind off 4 (5, 6, 7) sts at the beg of the next WS row – 42 (47, 50, 52) sts rem.

**Next Row (RS Dec Row):** K1, cont as est'd to last 3 sts, k2tog, k1 – 1 st dec'd, 41 (46, 49, 51) sts rem.

**Next Row (WS Even Row):** P1, cont as est'd to last st, p1.

Rep Dec Row and Even Row, 4 (4, 6, 6) more times – 4 (4, 6, 6) sts dec'd, 37 (42, 43, 45) sts rem.

**Next Row (RS Dec Row):** K1, cont as est'd to last 3 sts, k2tog, k1 – 1 st dec'd, 36 (41, 42, 44) sts rem.

**Next Row (WS Dec Row):** P1, p2tog, cont as est'd to last st, p1 – 1 st dec'd, 35 (40, 41, 43) sts rem.

Rep RS and WS Dec Row, 9 (9, 8, 8) more times – 18 (18, 16, 16) sts dec'd, 17 (22, 25, 27) sts rem.

Work even in patt as est'd, if necessary, until piece meas 8 (9½, 11, 12½)" from armhole bind-off, ending with a WS row. Place sts on holder or waste yarn.

## FINISHING

Gently wash and block pieces to finished measurements. Weave in ends. With RS facing together, join Left Front and Left Back shoulders using the three-needle bind-off. Rep for Right Front and Right Back shoulders.

### Right Back Button Band

With RS facing and smaller ndl, beg at Right Back neck bind-off edge, pick up and knit 95 (103, 113, 121) sts.

Work in K1, P1 Rib until piece meas 1" from picked up edge, ending with a WS row. Bind off all sts in patt.

### Left Back Button Band

*Note: On Row 4, the double yarn-overs are worked with the preceding stitch and first stitch following the double yarn-overs. If the first stitch is a knit stitch: ssk. If the First stitch is a purl stitch: p2tog. If the second stitch following the double yarnover is a knit stitch: k2tog. If the second stitch following the yarnover is a purl stitch, p2tog.*

With RS facing and smaller ndl, beg at the bottom of Left Back, pick up and knit 95 (103, 113, 121) sts evenly along Left Back edge.

**Row 1 (WS):** Work Row 2 of K1, P1 Rib to end.

**Row 2 (RS):** Work Row 1 of K1, P1 Rib to end.

**Row 3 (Buttonhole Row):** Cont as est'd over 6 (6, 4, 5) sts, [yo] 2 times, {work in patt for 13 (14, 14, 15) sts, [yo] 2 times} 6 (6, 7, 7) times, cont as est'd over last 11 (13, 11, 11) sts – 7 (7, 8, 8) buttonholes.

**Row 4 (Buttonhole Row):** Cont as est'd to 1 st bef the first double yo, [work next st and the first yo tog, then work the second yo and foll st tog, cont as est'd for 12 (13, 13, 14) sts] 6 (6, 7, 7) times, cont as est'd to end.

Cont in K1, P1 Rib as est'd until piece meas 1" from picked-up edge, ending with a WS row. Bind off all sts in patt.

Weave in rem ends. With needle and thread, sew 7 (7, 8, 8) buttons onto Right Back Button Band, opposite to buttonholes.

Knit, Relax, Smile, Repeat!

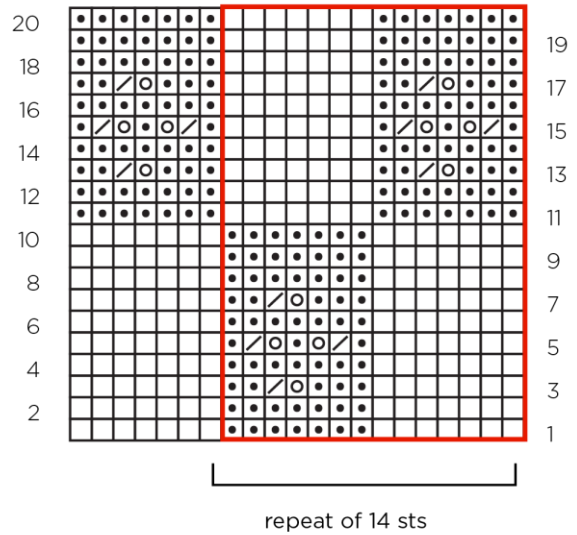
2021 © Universal Yarn, Inc.

All rights reserved. This pattern may not be reproduced for business, trade or sale.  
Questions? Contact [patterns@universalyarn.com](mailto:patterns@universalyarn.com)

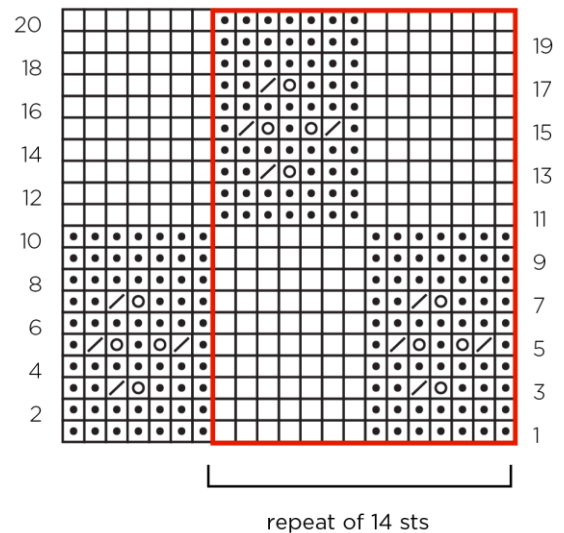
## Abbreviations

approx	approximately
beg	begin(ning)
cont	continue
dec('d)	decrease(d)
est'd	established
foll	follow
k	knit
k2tog	knit 2 stitches together (1 st dec'd)
m	marker
meas	measures
ndl	needle
p	purl
p2tog	purl 2 sts together (1 st dec'd)
patt	pattern
rem	remain(ing)
rep	repeat
RS	right side
sl	slip
ssk	slip next 2 sts individually knitwise, slip them back to left needle in this position, knit them together through the back loops (1 st dec'd)
ssp	slip next 2 sts individually knitwise, slip them back to left needle in this position, purl them together through the back loops (1 st dec'd)
st(s)	stitch(es)
WS	wrong side
yo	yarn over

## Checkerboard Lace - Front



## Checkerboard Lace - Back



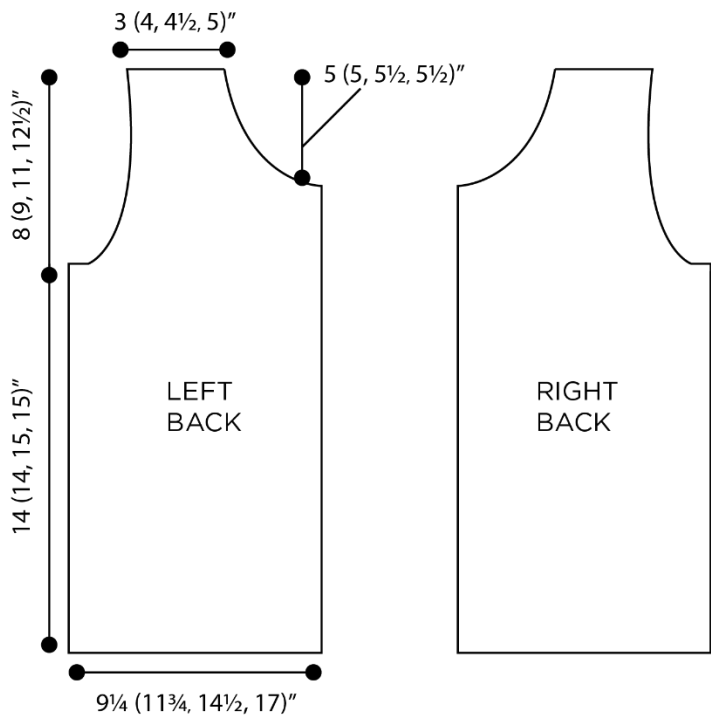
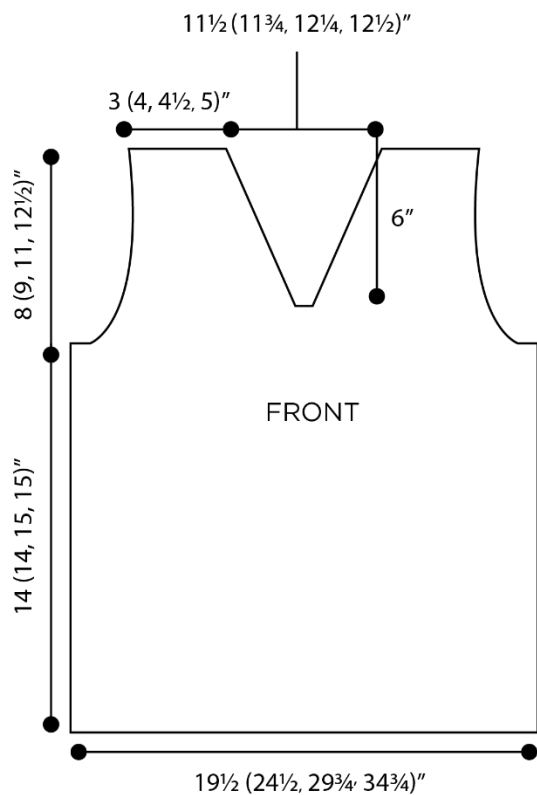
## Key

- pattern repeat
- knit on RS, purl on WS
- purl on WS, knit on WS
- yo
- / k2tog

Knit, Relax, Smile, Repeat!

2021 © Universal Yarn, Inc.

All rights reserved. This pattern may not be reproduced for business, trade or sale.  
Questions? Contact [patterns@universalyarn.com](mailto:patterns@universalyarn.com)



Knit, Relax, Smile, Repeat!

2021 © Universal Yarn, Inc.

All rights reserved. This pattern may not be reproduced for business, trade or sale.  
 Questions? Contact [patterns@universalyarn.com](mailto:patterns@universalyarn.com)