



PATTERN COLLECTION

Accessories



Hedgerow

Designed by Aubrey Busek

SKILL

Knitting

DIFFICULTY

Easy

SIZES

One Size

FINISHED MEASUREMENTS

Width: 15"

Length: 53½"

MATERIALS

[Universal Yarn Major](#) (100% acrylic; 200g/328 yds)

- 115 Stonewall (A) – 1 skein
- 141 Greenhouse (B) – 1 skein

Needle: US Size 10 (6 mm) 32-40" circular (to accommodate large number of sts) *or size needed to obtain gauge*

Notions: Tapestry needle, 6" piece of cardboard (to make tassels)

GAUGE

15 sts x 32 rows = 4" in Slip Stitch

Texture patt

Save time, check your gauge.

PATTERN NOTES

An eye-catching accessory designed to highlight the vibrant colors of our machine-washable Major yarn, this piece will help you keep the chill at bay while scoring Major style points.

This accessory is knit flat from the bottom up, working along the widest edge. Please note that this project is written to make the most of 2 skeins of yarn. You will need to unravel your swatch to use in the final piece. Should you wish to make the wrap larger or make larger tassels than is instructed, we do recommend purchasing another skein of color A.

In this pattern, work all slipped stitches purlwise unless otherwise indicated.

STITCH GUIDE

Slip Stitch Texture

(multiple of 3 sts, plus 2)

RS Rows 1 and 3: With color A, k2, * sl 1 wyib, k2; rep from * to end of row.

WS Rows 2 and 4: With color A, k2, * sl 1 wyif, k2; rep from * to end of row.

RS Rows 5 and 7: With color B, k1, * sl 1 wyib, k2; rep from * to last 4 sts, sl 1 wyib, k3.

WS Rows 6 and 8: With color B, k3, * sl 1 wyif, k2; rep from * to last 2 sts, sl 1 wyif, k1.

Rep Rows 1-8 for patt.

PATTERN BEGINS

WRAP

With color B, cast on 200 sts..

Work 4 rows in Garter st.

Join color A, do not break color B.

Work in Slip Stitch Texture patt until piece meas approx. 14¾" from cast-on edge, ending with Row 4 of patt. Break color A, cont with color B only.

Knit 4 rows in Garter st.

Bind off all sts kwise.

FINISHING

Gently wash and block to finished measurements. Weave in ends.

Tassels

(make 3 with color B and 2 with color A)

Wrap yarn 50 times around a 6" piece of cardboard. Cut one end of the wrapped yarn.

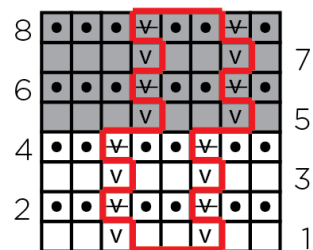
Pass a separate 12" piece of yarn through the un-cut end of the wrapped yarn, and then wrap it around the wrapped yarn several times. Tie a color A tassel to each end of the scarf and space the remaining tassels evenly in between. Trim tassels neatly to 5½".



Abbreviations

approx.	approximately
circ	circular
cont	continue
garter st	knit every row
k	knit
meas	measure(s)
ndl	needle
patt	pattern
rep	repeat
RS	right side
sl	slip
st(s)	stitch(es)
WS	wrong side
wyib	with yarn held in back
wyif	with yarn held in front

Slip Stitch Texture



Key



pattern repeat



With color A, knit on RS, purl on WS



With color B, knit on RS, purl on WS



With color A, purl on RS, knit on WS



With color B, purl on RS, knit on WS



With color A, sl 1 wyib



With color B, sl 1 wyib



With color A, sl 1 wyif



With color B, sl 1 wyif