



Pattern Collection: Accessory



Concord Scarf

Designed by Aubrey Busek

DIFFICULTY

Easy

SIZES

One Size

FINISHED MEASUREMENTS

Width: 20"

Length: 67½"

MATERIALS

Universal Yarn *Deluxe Worsted* (100% wool, 100g/220 yds)

- 15002 Violet Rustic (MC) – 3 skeins
- 15003 Grape Rustic (CC) – 1 skein

Needle: US Size 8 (5 mm) straight *or size needed to obtain gauge*

Notions: Tapestry needle, stitch markers

GAUGE

16 sts x 18 rows = 4" in Fans patt

Save time, check your gauge.

Knit. Relax. Smile. Repeat!

2020 © Universal Yarn, Inc.

All rights reserved.

This pattern may not be reproduced for business, trade or sale.

PATTERN NOTES

Accessories with lots of wearing possibility are perfect for chilly months. The Concord Scarf is scrunch-able enough to be a scarf, yet wide enough to be a wrap. A rhythmic lace pattern makes this a relaxing knit, perfect to work on in the evenings. Wear it however you want, and with two colors of Deluxe Worsted used in the pattern, any combination is possible.

This scarf is knit flat from the bottom up. Change colors as indicated. We recommend that you place markers in between pattern repeats to help you stay on track.

When working in the Fans pattern, do not break yarn at the end of each stripe. Instead, twist the strands of yarn around one another on every RS row.

STITCH GUIDE

Fans

(multiple of 15 sts, plus 1)

Row 1 (RS): With MC, * [k1, yo] 2 times, k1, [ssk] 2 times, k2, [k2tog], 2 times, [k1, yo] 2 times; rep from * to last st, k1.

Row 2 (WS): Purl.

Rows 3-4: Rep Rows 1-2.

Rows 5-6: With CC, knit.

Rep Rows 1-6 for patt.

SCARF

Lower Border

With CC, cast on 78 sts.

Work in Garter St for 4 rows. Join MC, do not break CC.

Main Scarf

Note: Change colors as indicated in Fans patt.

Row 1 (RS): With MC, k1, pm, work Row 1 of Fans patt to last st, pm, k1. Fans patt will be repeated 5 times across each row.

Row 2 (WS): K1, sl m, work Row 2 of Fans patt to m, sl m, k1.

Cont as est'd through Row 6 of Fans patt, then rep Rows 1-6 of Fans patt until piece meas 67" from cast on edge. Break MC, cont with CC only.

Upper Border

Work in Garter St for 4 rows. Bind off all sts.

FINISHING

Gently wash and block to finished measurements. Weave in ends.

Abbreviations

| | |
|------------------|---|
| CC | contrast color |
| garter st | knit every row |
| k | knit |
| k2tog | knit 2 stitches together (1 st dec'd) |
| m | marker |
| MC | main color |
| meas | measures |
| ndl | needle |
| p | purl |
| pm | place marker |
| rep | repeat |
| RS | right side |
| sl | slip |
| ssk | slip next 2 sts individually knitwise, slip them back to left needle in this position, knit them together through the back loops (1 st dec'd) |
| st(s) | stitch(es) |
| WS | wrong side |
| yo | yarn over |

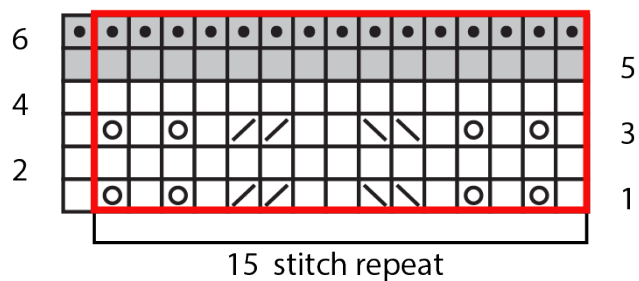
Knit. Relax. Smile. Repeat!

2020 © Universal Yarn, Inc.

All rights reserved.

This pattern may not be reproduced for business, trade or sale.

Fans



Key

- pattern repeat
- with MC, knit on RS, purl on WS
- With MC, purl on RS, knit on WS
- \ ssk
- / k2tog
- yo
- with CC, knit on RS, purl on WS
- with CC, purl on RS, knit on WS

Knit. Relax. Smile. Repeat!

2020 © Universal Yarn, Inc.

All rights reserved.

This pattern may not be reproduced for business, trade or sale.