



## Pattern Collection: Accessories



### **Anemone Shawl**

Designed by Aubrey Busek

### **DIFFICULTY**

Intermediate

### **SIZE**

One Size

### **FINISHED MEASUREMENTS**

**Wingspan:** 64"

**Length:** 32½"

### **MATERIALS**

**Universal Yarn Major** (100% anti-pilling acrylic; 200g / 328yds)

- 136 Caladium – 2 skeins

**Needles:** US Size 10 (6 mm) 40" circular  
(to accommodate large number of sts)  
*or size needed to obtain gauge*

**Notions:** Tapestry needle, stitch markers

### **GAUGE**

15 sts x 20 rows = 4" in Triangle Lace  
patt

**Save time, check your gauge.**

*Knit. Relax. Smile. Repeat!*

2021 © Universal Yarn, Inc.

All rights reserved.

This pattern may not be reproduced for business, trade or sale.

## PATTERN NOTES

When the first signs of Spring start to appear, the air is often still brisk and chilly. So, while our minds are on the bright florals and greenery to come, we still need something to keep us warm and cozy! Enter Anemone, a soft, textured shawl with bands of lace throughout. Knit in soft and warm Major, a self-shading, bulky-weight yarn, Anemone is bright and cheerful to balance out those chilly grey days. It works up quickly and the motifs are easy to memorize. We love this satisfying early Spring project!

This shawl is knit flat from the top-down. It begins using the garter tab cast-on method. We recommend placing stitch markers in between pattern repeats to help you stay on track.

## STITCH GUIDE

### Triangle Lace

(multiple of 8 sts)

**Row 1 (RS):** \* P1, k1; rep from \* to end.

**Row 2 (WS):** Rep Row 1.

**Row 3:** \* K1, p1; rep from \* to end.

**Row 4:** Rep Row 2.

**Rows 5-8:** Rep Rows 1-4.

**Row 9-10:** Rep Rows 1-2.

**Row 11** \* K2tog, yo, k1, yo, ssk, k3; rep from \* to end.

**WS Rows 12-16:** Purl.

**Row 13:** \* Yo, k3, yo, ssk, k1, k2tog; rep from \* to end.

**Row 15:** \* K5, yo, S2KP2, yo; rep from \* to end.  
Rep Rows 1-16 for patt.

## SHAWL

### Starting Tab

Cast on 3 sts. Knit 7 rows in garter st.

**Set-up row 1 (RS):** K3, rotate work 90 degrees, pick up and knit 3 sts from side of tab, pick up and knit 3 sts from cast-on edge – 9 sts.

**Set-up Row 2 (WS):** K3, pm, k1, pm, k1, pm, k1, pm, k3.

### Garter Section 1

**Row 1 (RS):** K3, sl m, yo, knit to m, yo, sl m, k1, sl m, yo, knit to m, yo, sl m, k3 – 4 sts inc'd, 13 sts.

**Row 2 (WS):** Knit.

**Rows 3-8:** Rep Rows 1-2, 3 more times – 12 sts inc'd, 25 sts.

### Lace Section 1

*Note 1: This section is also charted for your convenience.*

*Note 2: We recommend placing markers between pattern repeats to help you stay on track.*

**Row 1 (RS):** K3, sl m, yo, k1, work Row 1 of Triangle Lace to m, yo, sl m, k1, sl m, yo, k1, work Row 1 of Triangle Lace to m, yo, k3 – 4 sts inc'd, 29 sts.

**Row 2 (WS):** K3, sl m, k1, work Row 2 of Triangle Lace to 2 sts bef m, p1, k1, sl m, k1, sl m, k1, work Row 2 of Triangle Lace to 2 sts bef m, p1, k1, yo m, k3.

**Row 3:** K3, sl m, yo, k1, p1, work Row 3 of Triangle Lace to 1 st bef m, k1, yo, sl m, k1, sl m, yo, k1, p1, work Row 1 of Triangle Lace to 1 st bef m, k1, yo, sl m, k3 – 4 sts inc'd, 33 sts.

**Row 4:** K3, sl m, k1, p1, work Row 4 of Triangle Lace to 3 sts bef m, k1, p1, k1, sl m, k1, sl m, k1, p1, work Row 3 of Triangle Lace to 3 sts bef m, k1, p1, k1, sl m, k3.

**Row 5:** K3, sl m, yo, k1, p1, k1, work Row 5 of Triangle Lace to 2 sts bef m, p1, k1, yo, sl m, k1, sl m, yo, k1, p1, k1, work Row 5 of Triangle Lace to 2 sts bef m, p1, k1, yo, sl m, k3 – 4 sts inc'd, 37 sts.

**Row 6:** K3, sl m, k1, p1, k1, work Row 6 of Triangle Lace to 4 sts bef m, [p1, k1] 2 times, sl m, k1, sl m, k1, p1, k1, work Row 6 of Triangle Lace to 4 sts bef m, [p1, k1] 2 times, sl m, k3.

**Row 7:** K3, sl m, yo, [k1, p1] 2 times, work Row 7 of Triangle Lace to 3 sts bef m, k1, p1, k1, yo, sl m, k1, sl m, yo, [k1, p1] 2 times, work Row 7 of Triangle Lace to 3 sts bef m, k1, p1, k1, yo, sl m, k3 – 4 sts inc'd, 41 sts.

**Row 8:** K3, sl m, [k1, p1] 2 times, work Row 8 of Triangle Lace to 5 sts bef m, [k1, p1] 2 times, k1, sl m, k1, sl m, [k1, p1] 2 times, work Row 8 of Triangle Lace to 5 sts bef m, [k1, p1] 2 times, k1, sl m, k3.

*Knit. Relax. Smile. Repeat!*

2021 © Universal Yarn, Inc.

All rights reserved.

This pattern may not be reproduced for business, trade or sale.

**Row 9:** K3, sl m, yo, [k1, p1] 2 times, k1, work Row 9 of Triangle Lace to 4 sts bef m, [p1, k1] 2 times, yo, sl m, k1, sl m, yo, [k1, p1] 2 times, k1, work Row 9 of Triangle Lace to 4 sts bef m, [p1, k1] 2 times, yo, sl m, k3 – 4 sts inc'd, 45 sts.

**Row 10:** K3, sl m, [k1, p1] 2 times, k1, work Row 10 of Triangle Lace to 6 sts bef m, [p1, k1] 3 times, sl m, k1, sl m, [k1, p1] 2 times, k1, work Row 10 of Triangle Lace to 6 sts bef m, [p1, k1] 3 times, sl m, k3.

**Row 11:** K3, sl m, yo, k1, yo, ssk, k3, work Row 11 of Triangle Lace to 5 sts bef m, k2tog, yo, k1, yo, ssk, yo, sl m, k1, sl m, yo, k1, yo, ssk, k3, work Row 11 of Triangle Lace to 5 sts bef m, k2tog, yo, k1, yo, ssk, yo, sl m, k3 – 4 sts inc'd, 49 sts.

**WS Rows 12-16:** K3, sl m, purl to m, sl m, k1, sl m, purl to m, sl m, k3.

**Row 13:** K3, sl m, yo, k3, yo, ssk, k1, k2tog, work Row 13 of Triangle Lace to 5 sts bef m, yo, k3, yo, ssk, yo, sl m, k1, sl m, yo, k3, yo, ssk, k1, k2tog, work Row 13 of Triangle Lace to 5 sts bef m, yo, k3, yo, ssk, yo, sl m, k3 – 4 sts inc'd, 53 sts.

**Row 15:** K3, sl m, yo, k5, yo, S2KP2, yo, work Row 15 of Triangle Lace to 7 sts bef m, k5, yo, ssk, yo, sl m, k1, sl m, yo, k5, yo, S2KP2, yo, work Row 15 of Triangle Lace to 7 sts bef m, k5, yo, ssk, yo, sl m, k3 – 4 sts inc'd, 57 sts.

Rep Rows 1-16, two more times – 64 sts inc'd, 121 sts.

### Garter Section 2

Rep Garter Section 1 – 16 sts inc'd, 137 sts.

### Lace Section 2

Rep Lace Section 1 – 96 sts inc'd, 233 sts.

### Garter Section 3

Rep Garter Section 1 – 16 sts inc'd, 249 sts.

Bind off all sts in patt.

### FINSIHING

Weave in ends. Gently wash and block to finished measurements.

### Abbreviations

<b>circ</b>	circular
<b>garter st</b>	knit every row
<b>inc('d)</b>	increase(d)
<b>k</b>	knit
<b>k2tog</b>	knit 2 stitches together (1 st dec'd)
<b>m</b>	marker
<b>ndl</b>	needle
<b>patt</b>	pattern
<b>pm</b>	place marker
<b>rep</b>	repeat
<b>RS</b>	right side
<b>S2KP2</b>	slip 2 stitches as if to knit 2 together, knit 1, pass 2 slipped stitches over knit stitch; centered double decreases
<b>sl</b>	slip
<b>ssk</b>	slip next 2 sts individually knitwise, slip them back to left needle in this position, knit them together through the back loops (1 st dec'd)
<b>st(s)</b>	stitch(es)
<b>WS</b>	wrong side
<b>yo</b>	yarn over

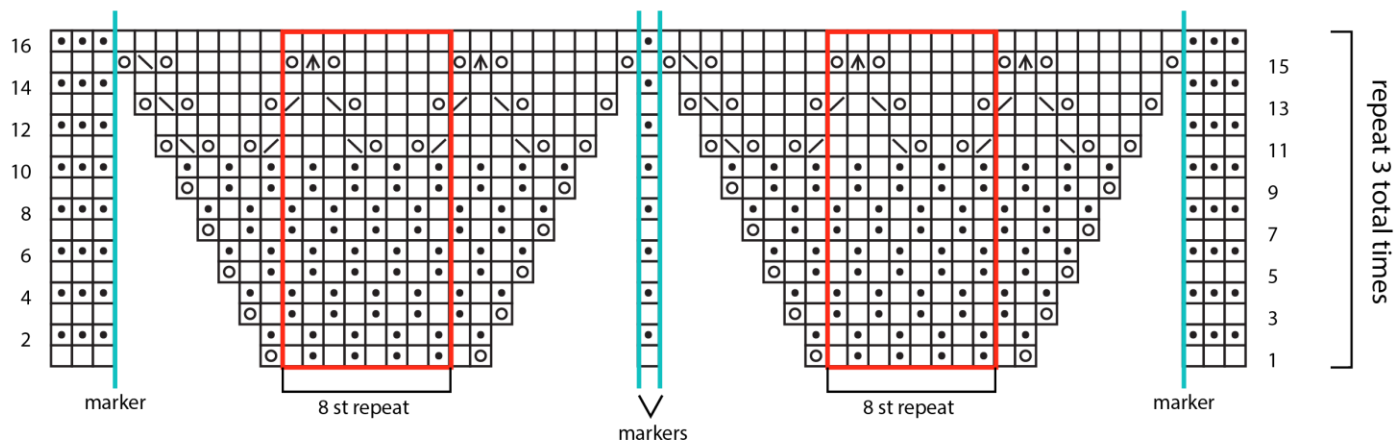
*Knit. Relax. Smile. Repeat!*

2021 © Universal Yarn, Inc.

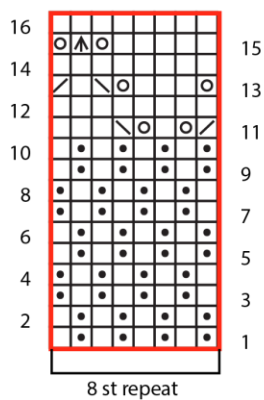
All rights reserved.

This pattern may not be reproduced for business, trade or sale.

### Lace Sections



### Triangle Lace



### Key

- | indicates marker
- pattern repeat
- knit on RS, purl on WS
- purl on RS, knit on WS
- / ssk
- \ k2tog
- yarn over
- ▲ S2KP2

*Knit. Relax. Smile. Repeat!*

2021 © Universal Yarn, Inc.

All rights reserved.

This pattern may not be reproduced for business, trade or sale.